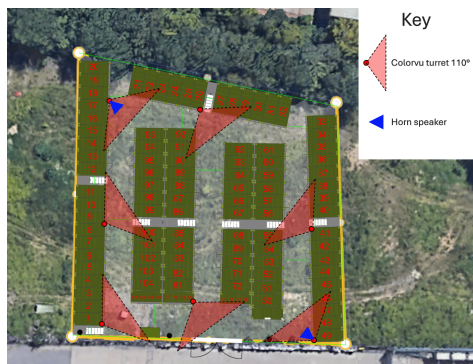


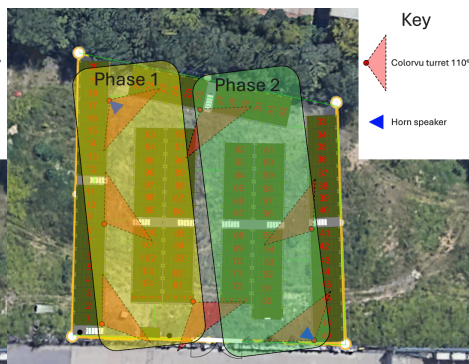
Job Sheet

Client site:	easyStorage Luton
Site contact:	John
Date of job:	2026-02-10
Days on site:	2
Engineer on site:	Matt / Luke
Type of job:	installation
Number of cameras:	4
Camera locations:	As per plan, bring camera from 80 over to 8 for now to provide coverage of the gate.

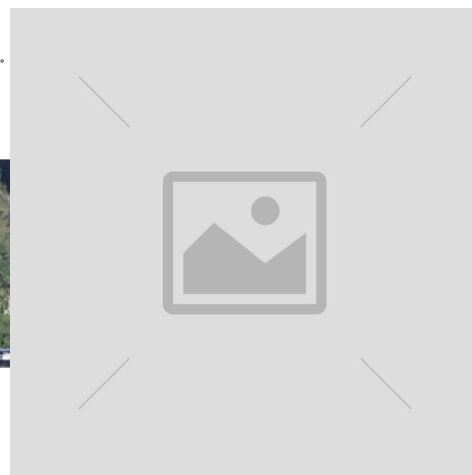
Camera Location Image 1



Camera Location Image 2



Camera Location Image 3



Camera Location Image 4

Camera Location Image 5

Camera Location Image 6



Recorder location:

Office

Recorder Location Image



Installation instructions:

Phase 1 There will be four Hikvision 8MP 4K Hybrid ColorVu and IR Acusense Turrets mounted on container poles to provide coverage of the site, The cameras have AI built in and we will utilize this to provide accurate notifications when there are any unwanted visitors on site. The cameras have built in white light technology that enables the cameras to provide a full colour image at night rather than the conventional grey scale images. I have attached a spec sheet for the cameras for you to have a look at. There will be one horn speaker located on the container pole and this will enable you to warn off any unwanted visitors, this would be a requirement for the site to be monitored should you wish to go down the monitoring route. There will be a Hikvision NVR 16 channel 8TB with built in acusense that will provide a minimum of 30 days of footage, There will be a 8 port PoE network switch to provide power and data for the cameras. The Hikvision NVR 16 channel 8TB with built in acusense will be housed inside a lockable data cabinet along with the amplifier and connected to your router that will enable you to view playback and live images on the app. Equipment breakdown 4 x Hikvision 8MP 4K Hybrid ColorVu and IR Acusense Turret. 1 x Hikvision NVR 16 channel 8TB with built in Acusense. 1 x 8 port PoE managed network switch. 4 x Hikvision deep bases. 1 x Horn speakers. 1 x Amplifier. 1 x Lockable data cabinet. 1 x Installation cost including CAT5 cable and electrical sundries. 1 x 12-Month Service and Maintenance Cover. 1 x Warning Signage and CCTV Policy Template.

Additional Information:

Make sure to leave slack on cables ready for when toppers are delivered, If you are able to run additional cable for phase 2 please do so to reduce the amount of time required for phase 2. Poles and router are to be supplied by the customer.